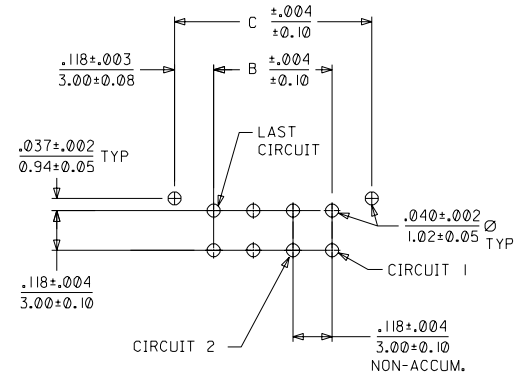
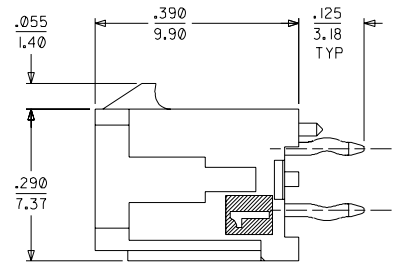
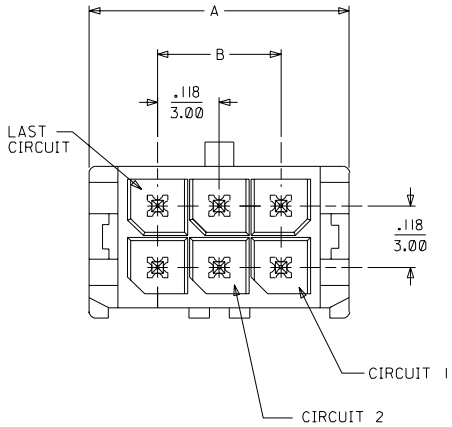


CKTS	43045		
	A	B	C
02	.262		.236
	6.65	NA	6.00
04	.380	.118	.354
	9.65	3.00	9.00
06	.498	.236	.472
	12.65	6.00	12.00
08	.616	.354	.591
	15.65	9.00	15.00
10	.734	.472	.709
	18.65	12.00	18.00
12	.852	.591	.827
	21.65	15.00	21.00
14	.970	.709	.945
	24.65	18.00	24.00
16	1.088	.827	1.063
	27.65	21.00	27.00
18	1.206	.945	1.181
	30.65	24.00	30.00
20	1.325	1.063	1.299
	33.65	27.00	33.00
22	1.443	1.181	1.417
	36.65	30.00	36.00
24	1.561	1.299	1.535
	39.65	33.00	39.00



PCB LAYOUT: COMPONENT SIDE
RECOMMEND PCB THICKNESS: .062/1.57

NOTES:

- HOUSING MATERIAL: GLASS FILLED LIQUID CRYSTAL POLYMER, UL 94V-0, COLOR: BLACK
TERMINAL MATERIAL: BRASS ALLOY
- FINISH:
191 = 100 M.I. MIN TIN-LEAD OVER NICKEL
605 = 15 M.I. MIN SELECT GOLD / 50 M.I. MIN SELECT TIN/LEAD BOTH OVER NICKEL
606 = 30 M.I. MIN SELECT GOLD / 50 M.I. MIN SELECT TIN/LEAD BOTH OVER NICKEL
- PRODUCT SPECIFICATION: PS-43045
- MATES WITH: RECEPTACLE NUMBER 43025
- TRAY PACKAGE PER: PK-70873-0314

CKTS	FINISH 191		FINISH 605		FINISH 606	
	MATERIAL NO:		MATERIAL NO:		MATERIAL NO:	
02	43045-0212		43045-0213		43045-0214	
04	43045-0412		43045-0413		43045-0414	
06	43045-0612		43045-0613		43045-0614	
08	43045-0812		43045-0813		43045-0814	
10	43045-1012		43045-1013		43045-1014	
12	43045-1212		43045-1213		43045-1214	
14	43045-1412		43045-1413		43045-1414	
16	43045-1612		43045-1613		43045-1614	
18	43045-1812		43045-1813		43045-1814	
20	43045-2012		43045-2013		43045-2014	
22	43045-2212		43045-2213		43045-2214	
24	43045-2412		43045-2413		43045-2414	

REV DWG NO. A	EC NO. UCR1999-0756	QUALITY SYMBOLS MAJOR CRITICAL	GENERAL TOLERANCES: (UNLESS SPECIFIED)	SCALE :	DESIGN UNITS <input checked="" type="checkbox"/> mm <input type="checkbox"/> INCH	DIMENSIONS: <input type="checkbox"/> mm <input checked="" type="checkbox"/> INCH <input type="checkbox"/> ONLY	SHT REV	
	DRWN: SAMIEC 00/03/15	DESCRIPTION	4 PLACES ±0.10	DRAWN BY & DATE SAMIEC 00/03/15	THIRD ANGLE PROJECTION	TITLE: MICRO FIT (3.0) DUAL ROW VERTICAL THRU HOLE HEADER - ASS'Y	SHEET NO. 1 OF 1	
	CHK: MUELLER 00/03/15		3 PLACES ±0.10					CHECKED BY & DATE MUELLER 00/03/15
	APP: EDGLEY 00/03/15		2 PLACES ±0.25					APPROVED BY & DATE EDGLEY 00/03/15
	1 PLACE ±0.36		CAD FILENAME					
	ANGULAR: ±1/2 °		DRAFT WHERE APPLICABLE MUST REMAIN WITHIN DIMENSIONS	THIS DRAWING CONTAINS INFORMATION THAT IS PROPRIETARY TO MOLEX INCORPORATED AND SHOULD NOT BE USED WITHOUT WRITTEN PERMISSION.				